

VS16K Adjustable Vacuum Switch



The VS16K is a general purpose vacuum switch with a user adjustable set-point and small switching differential. This diaphragm operated vacuum switch is high vacuum compatible and corrosion resistant with all wetted parts made from stainless steel. A high current rating allows direct switching of loads without additional relays or external power supplies.

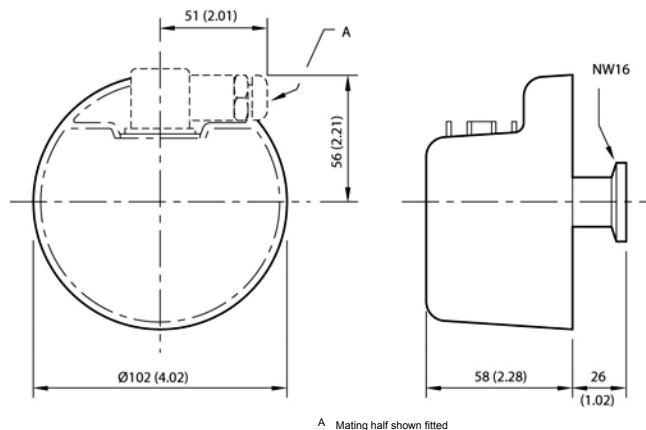
This switch should not be used for safety critical applications. For many interlock applications the Edwards IS16K may be more suitable.



Features & Benefits

- Set-point range 30-1000 mbar
- User adjustable
- Reproducible
- Changeover contacts for normally open or normally closed operation
- Switch point independent of gas composition

Dimensions



Applications

- Furnaces
- Laboratories
- Tank units
- Packaging
- General purpose pumping units

Ordering Information

Product Description	Order No.
VS16K Adjustable Vacuum Switch	D05915000

Technical Data

Range of adjustment	30 to 1000 mbar
Maximum switching differential	30 mbar
Maximum working pressure	1 bar gauge (2 bar absolute)
Electrical rating	10 A resistive, 5 A inductive at 250 V a.c.
Electrical connection plug	Type 283 mPm
Internal volume	7 cm ³
Materials in vacuum	Stainless steel
Leak rate	$<1 \times 10^{-9}$ mbar l s ⁻¹
Enclosure classification	IP52
Weight	0.7 kg
Vacuum connection	NW16
Accessories supplied	Mating electrical socket type 183 mPm

Set-point varies with barometric pressure