

# IS16K Vacuum Interlock Switch



The IS16K vacuum interlock switch is designed to safeguard the operator by ensuring that electrical circuits in the vacuum chamber do not remain energized when the system is let up to atmosphere.

Typical applications include interlocking of the HT cleaning or process circuits on thin film deposition and vacuum systems.

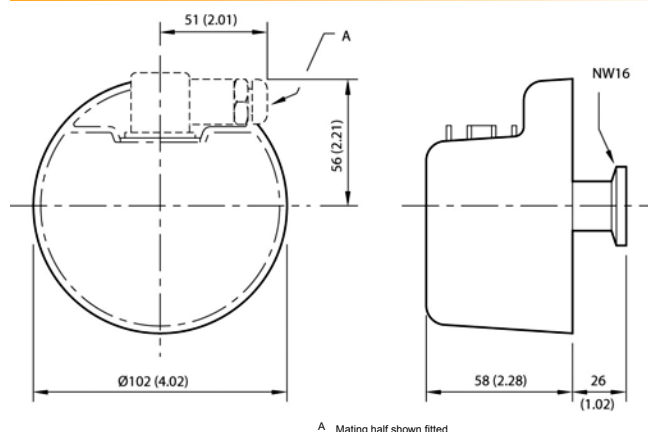
The IS16K is high vacuum compatible and corrosion resistant, with all wetted parts made from stainless steel. A high current rating allows direct switching of loads without additional relays or external power supplies.

4

## Features & Benefits

- Single non-adjustable set-point, cannot be tampered with
- Positive break switch
- Rapid contact separation, prevents arcing
- Breaks circuit directly, no relays required
- Corrosion resistant materials exposed to vacuum

## Dimensions



## Applications

- Furnaces
- Laboratories
- Tank units
- Packaging
- General purpose pumping units

## Ordering Information

Product Description	Order No.
IS16K Vacuum Interlock Switch	D05914000

## Technical Data

Fixed set-point	640 $\pm$ 120 mbar*
Maximum switching differential	100 mbar
Maximum working pressure	1 bar gauge (2 bar absolute)
Electrical rating	10 A resistive, 5 A inductive at 250 V a.c.
Electrical connection plug	Type 283 mPm
Internal volume	7 cm <sup>3</sup>
Materials in vacuum	Stainless steel
Leak rate	<1 x 10 <sup>-9</sup> mbar l s <sup>-1</sup>
Enclosure classification	IP52
Weight	0.7 kg
Vacuum connection	NW16
Accessories supplied	Mating electrical socket type 183 mPm

\* Set point varies with barometric pressure