

EDP80 - Dry Chemical Pumps

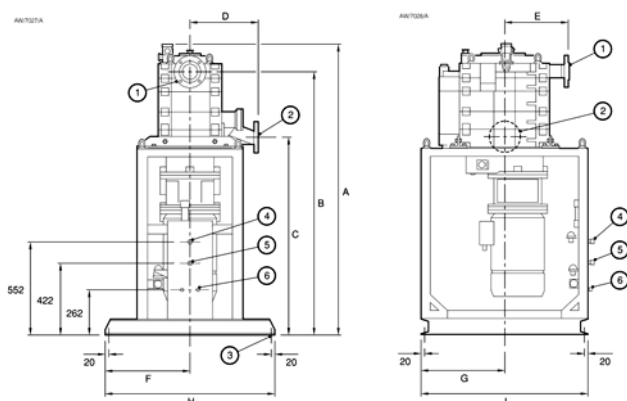
EDP pumps are based on Edwards' oil-free, non-contacting, award-winning, reverse claw mechanism. They provide consistent vacuum at high efficiencies and low costs of ownership. Dry pumps completely eliminate all problems of process contamination and creation of polluted effluent, which are experienced with traditional wet vacuum pump technologies.



Features & Benefits

- Staged compression for optimum temperature profile within the pump and no requirement for cooling gas injection
- Inherently free draining
- Able to handle liquid or particulate carryover
- Short gas path eliminates particulate build-up and corrosion - Edwards' patented design
- Can flush with solvents, water or steam

Dimensions



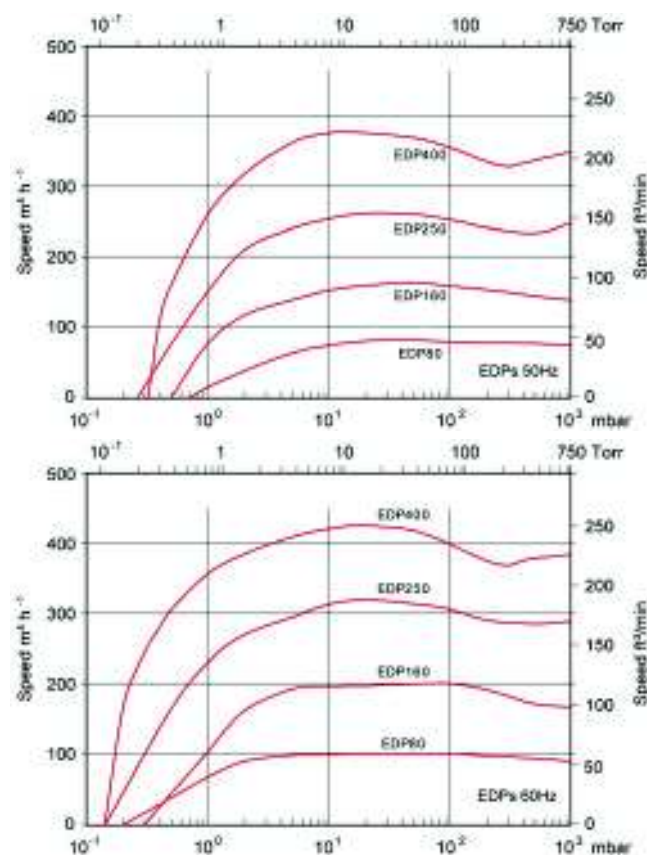
EDP80	A	B	C	D	E	F	G	H	I
	1423	1254	974	353	443	350	350	700	850
	(56.0)	(49.4)	(38.3)	(13.9)	(17.4)	(13.8)	(13.8)	(27.6)	(33.5)

1. Pump inlet
2. Pump outlet
3. Fixing hole: Ø18 mm (4 off)
4. Cooling water outlet connection
5. Cooling water inlet connection
6. Nitrogen supply inlet connection

Applications

- Drying
- Distillation
- Reactor service
- Solvent recovery
- House/Central vacuum

Performance Curves



Technical Data

Maximum pumping speed	
50 Hz	83 m ³ h ⁻¹ / 49 ft ³ min ⁻¹
60 Hz	102 m ³ h ⁻¹ / 60 ft ³ min ⁻¹
Capacity at 10 mbar (7.5 Torr)	
50 Hz	75 m ³ h ⁻¹ / 44 ft ³ min ⁻¹
60 Hz	102 m ³ h ⁻¹ / 60 ft ³ min ⁻¹
Ultimate vacuum	
50 Hz	0.5 mbar / 0.4 Torr
60 Hz	0.3 mbar / 0.2 Torr
Maximum back pressure	
Standard	1150 mbar / 2.2 psig
Optional*	1300 mbar / 4.4 psig
Power consumption at 10 mbar (7.5 Torr)	
50 Hz	3.3 kW / 4.4 hp
60 Hz	4.0 kW / 5.4 hp
Standard motor (380 – 400 V, 3 ph, 50 Hz)	5.5 kW
Standard motor (200 – 460 V, 3 ph, 60 Hz)	7.5 hp
Cooling water flow rate (adjustable)	
50 Hz	1 – 8 lmin ⁻¹ / 0.3 – 2.1 galmin ⁻¹
60 Hz	1 – 10 lmin ⁻¹ / 0.3 – 2.6 galmin ⁻¹
Cooling water supply pressure	2 – 10 barg / 29 – 145 psig
Seal purge flow (maximum), regulated to 0.3 - 0.5 barg (5 – 7 psig)	
	20 l min ⁻¹ / 0.7 ft ³ min ⁻¹
Seal purge supply pressure (minimum - maximum)	2 – 10 barg / 29 – 145 psig
Noise (max. with exhaust silencer)	73 dB(A)
Weight (with frame and standard motor)	
50 Hz	648 kg / 1429 lbs
60 Hz	650 kg / 1433 lbs
Inlet	2 ANSI / DN50
Outlet	1.5 ANSI / DN40
Pumping mechanism	3 stage reversed claw

* Consult Edwards

Ordering Information

Product Description	Order No.
EDP80 50Hz, Bareshaft Pump	A70545000
EDP80 60Hz, Bareshaft Pump	A70547000
Accessories & Spares	Order No.
Spares Kit Routine Maintenance DP	A70501825
Spares Kit Motor Fitment DP	A70501805
Spares Kit Upper Bearing DP	A70501826
Spares Kit Swept Volume DP	A70501827
Spares Kit Lower Bearing DP	A70501828
Std Replacement PRV DP	A70501816
Bellows Replacement PRV DP	A70501820
Swing PRV Chemical	A70501832
Spares Kit Bellows Overhaul DP	A70501829
Spares Kit O Ring DP	A70501821
Spares Kit Std PRV Overhaul DP	A70501831
Spares Kit Swing PRV Overhaul Chemical	A70501833
DP250/EDP200 Clutch Tools	A21071082

EDP160 - Dry Chemical Pumps

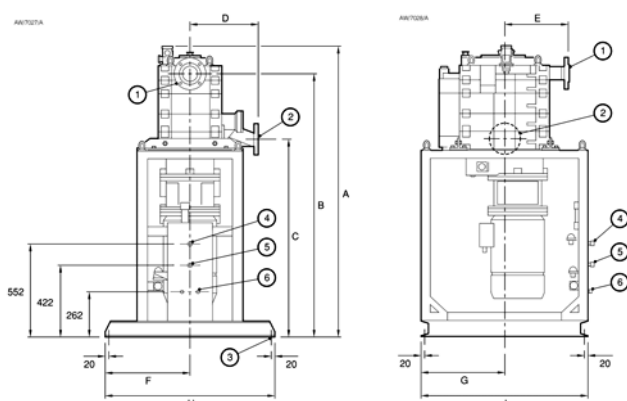
EDP pumps are based on Edwards' oil-free, non-contacting, award-winning, reverse claw mechanism. They provide consistent vacuum at high efficiencies and low costs of ownership. Dry pumps completely eliminate all problems of process contamination and creation of polluted effluent, which are experienced with traditional wet vacuum pump technologies.



Features & Benefits

- Staged compression for optimum temperature profile within the pump and no requirement for cooling gas injection
- Inherently free draining
- Able to handle liquid or particulate carryover
- Short gas path eliminates particulate build-up and corrosion - Edwards' patented design
- Can flush with solvents, water or steam

Dimensions



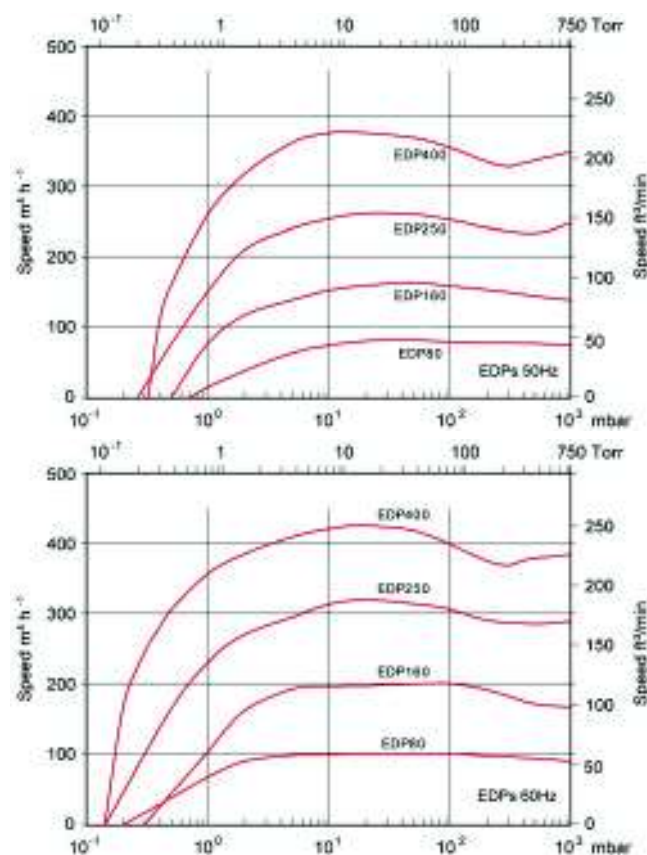
EDP160	A	B	C	D	E	F	G	H	I
	1423	1254	974	353	443	350	350	700	850
	(56.0)	(49.4)	(38.3)	(13.9)	(17.4)	(13.8)	(13.8)	(27.6)	(33.5)

1. Pump inlet
2. Pump outlet
3. Fixing hole: Ø16 mm (4 off)
4. Cooling water outlet connection
5. Cooling water inlet connection
6. Nitrogen supply inlet connection

Applications

- Drying
- Distillation
- Reactor service
- Solvent recovery
- House/Central vacuum

Performance Curves



Technical Data

Maximum pumping speed	
50 Hz	163 m ³ h ⁻¹ / 96 ft ³ min ⁻¹
60 Hz	202 m ³ h ⁻¹ / 119 ft ³ min ⁻¹
Capacity at 10 mbar (7.5 Torr)	
50 Hz	153 m ³ h ⁻¹ / 90 ft ³ min ⁻¹
60 Hz	198 m ³ h ⁻¹ / 117 ft ³ min ⁻¹
Ultimate vacuum	
50 Hz	0.5 mbar / 0.4 Torr
60 Hz	0.3 mbar / 0.2 Torr
Maximum back pressure	
Standard	1150 mbar / 2.2 psig
Optional*	1300 mbar / 4.4 psig
Power consumption at 10 mbar (7.5 Torr)	
50 Hz	4.9 kW / 6.6 hp
60 Hz	4.9 kW / 6.6 hp
Standard motor (380 – 400 V, 3 ph, 50 Hz)	7.5 kW
Standard motor (200 – 460 V, 3 ph, 60 Hz)	11 hp
Cooling water flow rate (adjustable)	
50 Hz	1 – 8 lmin ⁻¹ / 0.3 – 2.1 galmin ⁻¹
60 Hz	1 – 10 lmin ⁻¹ / 0.3 – 2.6 galmin ⁻¹
Cooling water supply pressure	2 – 10 barg / 29 – 145 psig
Seal purge flow (maximum), regulated to 0.3 - 0.5 barg (5 – 7 psig)	20 lmin ⁻¹ / 0.7 ft ³ min ⁻¹
Seal purge supply pressure (minimum - maximum)	2 – 10 barg / 29 – 145 psig
Noise (max. with exhaust silencer)	78 dB(A)
Weight (with frame and standard motor)	
50 Hz	747 kg / 1647 lbs
60 Hz	756 kg / 1667 lbs
Inlet	3 ANSI / DN80
Outlet	1.5 ANSI / DN40
Pumping mechanism	3 stage reversed claw

* Consult Edwards

Ordering Information

Product Description	Order No.
EDP160 50Hz, Bareshaft Pump	A70544000
EDP160 60Hz, Bareshaft Pump	A70546000
Accessories & Spares	Order No.
Spares Kit Routine Maintenance DP	A70501825
Spares Kit Motor Fitment DP	A70501805
Spares Kit Upper Bearing DP	A70501826
Spares Kit Swept Volume DP	A70501827
Spares Kit Lower Bearing DP	A70501828
Std Replacement PRV DP	A70501816
Bellows Replacement PRV DP	A70501820
Swing PRV Chemical	A70501832
Spares Kit Bellows Overhaul DP	A70501829
Spares Kit O Ring DP	A70501821
Spares Kit Std PRV Overhaul DP	A70501831
Spares Kit Swing PRV Overhaul Chemical	A70501833
DP250/EDP200 Clutch Tools	A21071082

EDP250 - Dry Chemical Pumps

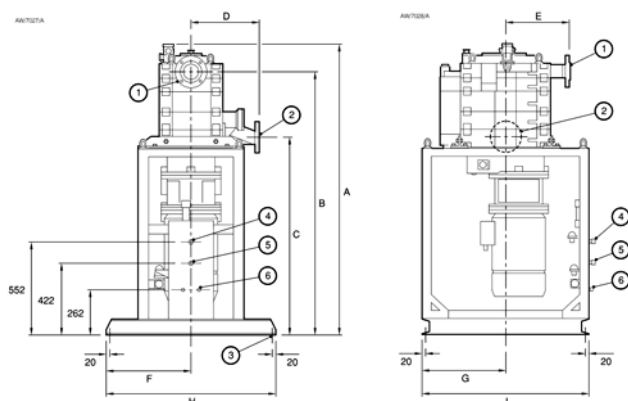
EDP pumps are based on Edwards' oil-free, non-contacting, award-winning, reverse claw mechanism. They provide consistent vacuum at high efficiencies and low costs of ownership. Dry pumps completely eliminate all problems of process contamination and creation of polluted effluent, which are experienced with traditional wet vacuum pump technologies.



Features & Benefits

- Staged compression for optimum temperature profile within the pump and no requirement for cooling gas injection
- Inherently free draining
- Able to handle liquid or particulate carryover
- Short gas path eliminates particulate build-up and corrosion - Edwards' patented design
- Can flush with solvents, water or steam

Dimensions



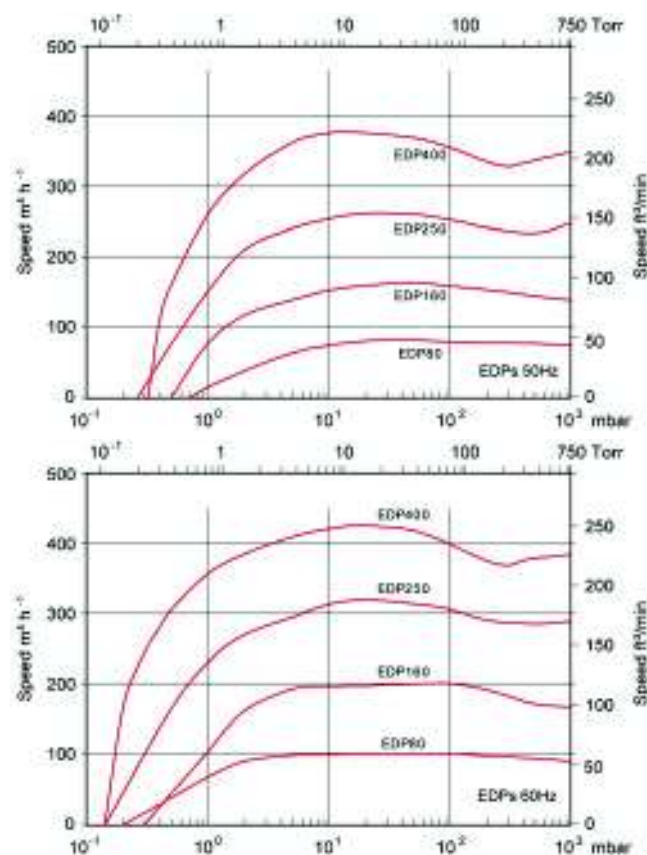
EDP250	A	B	C	D	E	F	G	H	I
	1423	1254	974	353	443	350	350	700	850
	(56.0)	(49.4)	(38.3)	(13.9)	(17.4)	(13.8)	(13.8)	(27.6)	(33.5)

1. Pump inlet
2. Pump outlet
3. Fixing hole: Ø16 mm (4 off)
4. Cooling water outlet connection
5. Cooling water inlet connection
6. Nitrogen supply inlet connection

Applications

- Drying
- Distillation
- Reactor service
- Solvent recovery
- House/Central vacuum

Performance Curves



Technical Data

Maximum pumping speed	
50 Hz	260 m ³ h ⁻¹ / 320 ft ³ min ⁻¹
60 Hz	153 m ³ h ⁻¹ / 188 ft ³ min ⁻¹
Capacity at 10 mbar (7.5 Torr)	
50 Hz	255 m ³ h ⁻¹ / 150 ft ³ min ⁻¹
50 Hz	315 m ³ h ⁻¹ / 185 ft ³ min ⁻¹
Ultimate vacuum	
50 Hz	0.5 mbar / 0.4 Torr
60 Hz	0.2 mbar / 0.2 Torr
Maximum back pressure	
Standard	1150 mbar / 2.2 psig
Optional*	1300 mbar / 4.4 psig
Power consumption at 10 mbar (7.5 Torr)	
50 Hz	6.0 kW / 8.0 hp
60 Hz	6.0 kW / 8.0 hp
Standard motor (380 – 400 V, 3 ph, 50 Hz)	
50 Hz	11 kW
60 Hz	15 kW
Standard motor (200 – 460 V, 3 ph, 60 Hz)	
50 Hz	15 hp
60 Hz	20 hp
Cooling water flow rate (adjustable)	
50 Hz	1 – 10 lmin ⁻¹ / 0.3 – 2.6 galmin ⁻¹
60 Hz	1 – 10 lmin ⁻¹ / 0.3 – 2.6 galmin ⁻¹
Cooling water supply pressure	
	2 – 10 barg / 29 – 145 psig
Seal purge flow (maximum), regulated to 0.3 - 0.5 barg (5 – 7 psig)	
	20 lmin ⁻¹ / 0.7 ft ³ min ⁻¹
Seal purge supply pressure (minimum - maximum)	
	2 – 10 barg / 29 – 145 psig
Noise (max. with exhaust silencer)	
50 Hz	78 dB(A)
60 Hz	79 dB(A)
Weight (with frame and standard motor)	
50 Hz	756 kg / 1667 lbs
60 Hz	848 kg / 1870 lbs
Inlet	3 ANSI / DN80
Outlet	1.5 ANSI / DN40
Pumping mechanism	
	3 stage reversed claw

* Consult Edwards

Ordering Information

Product Description	Order No.
EDP250 50/60Hz, Bareshaft Pump	A70543000
Accessories & Spares	Order No.
Spares Kit Routine Maintenance DP	A70501825
Spares Kit Motor Fitment DP	A70501805
Spares Kit Upper Bearing DP	A70501826
Spares Kit Swept Volume DP	A70501827
Spares Kit Lower Bearing DP	A70501828
Std Replacement PRV DP	A70501816
Bellows Replacement PRV DP	A70501820
Swing PRV Chemical	A70501832
Spares Kit Bellows Overhaul DP	A70501829
Spares Kit O Ring DP	A70501821
Spares Kit Std PRV Overhaul DP	A70501831
Spares Kit Swing PRV Overhaul Chemical	A70501833
DP250/EDP200 Clutch Tools	A21071082

EDP400 - Dry Chemical Pumps

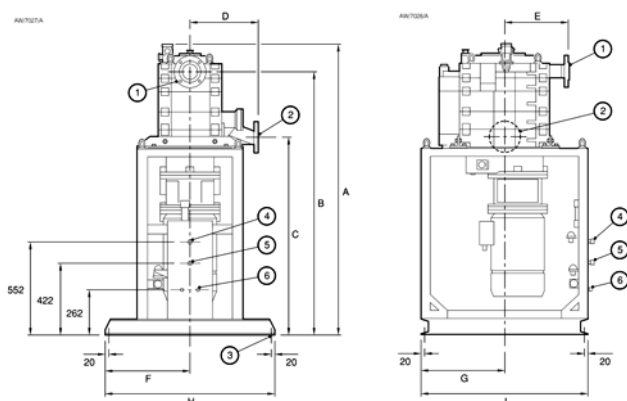
EDP pumps are based on Edwards' oil-free, non-contacting, award-winning, reverse claw mechanism. They provide consistent vacuum at high efficiencies and low costs of ownership. Dry pumps completely eliminate all problems of process contamination and creation of polluted effluent, which are experienced with traditional wet vacuum pump technologies.



Features & Benefits

- Staged compression for optimum temperature profile within the pump and no requirement for cooling gas injection
- Inherently free draining
- Able to handle liquid or particulate carryover
- Short gas path eliminates particulate build-up and corrosion - Edwards' patented design
- Can flush with solvents, water or steam

Dimensions



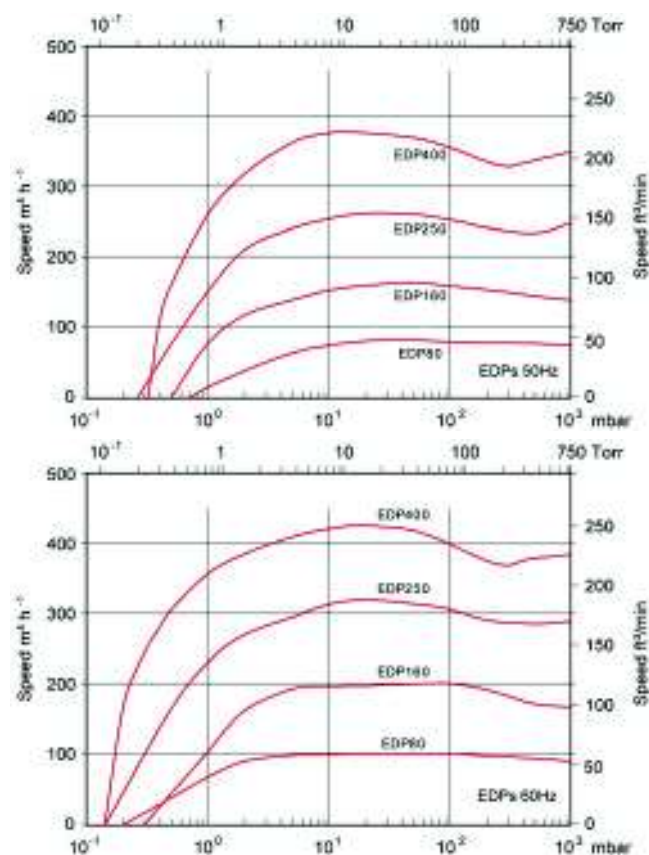
EDP400	A	B	C	D	E	F	G	H	I
	1423	1254	974	353	443	350	350	700	850
	(56.0)	(49.4)	(38.3)	(13.9)	(17.4)	(13.8)	(13.8)	(27.6)	(33.5)

1. Pump inlet
2. Pump outlet
3. Fixing hole: Ø18 mm (4 off)
4. Cooling water outlet connection
5. Cooling water inlet connection
6. Nitrogen supply inlet connection

Applications

- Drying
- Distillation
- Reactor service
- Solvent recovery
- House/Central vacuum

Performance Curves



Technical Data

Maximum pumping speed	
50 Hz	377 m ³ h ⁻¹ / 222 ft ³ min ⁻¹
60 Hz	427 m ³ h ⁻¹ / 251 ft ³ min ⁻¹
Capacity at 10 mbar (7.5 Torr)	
50 Hz	377 m ³ h ⁻¹ / 222 ft ³ min ⁻¹
50 Hz	422 m ³ h ⁻¹ / 248 ft ³ min ⁻¹
Ultimate vacuum	
50 Hz	0.4 mbar / 0.3 Torr
60 Hz	0.2 mbar / 0.2 Torr
Maximum back pressure	
Standard	1150 mbar / 2.2 psig
Power consumption at 10 mbar (7.5 Torr)	
50 Hz	7.0 kW / 9.4 hp
60 Hz	7.0 kW / 9.4 hp
Standard motor (380 – 400 V, 3 ph, 50 Hz)	
50 Hz	18.5 kW
60 Hz	25.0 kW
Standard motor (200 – 460 V, 3 ph, 60 Hz)	
50 Hz	25.0 hp
60 Hz	30.0 hp
Cooling water flow rate (adjustable)	
50 Hz	1 – 10 lmin ⁻¹ / 0.3 – 2.6 galmin ⁻¹
60 Hz	1 – 10 lmin ⁻¹ / 0.3 – 2.7 galmin ⁻¹
Cooling water supply pressure	
	2 – 10 barg / 29 – 145 psig
Seal purge flow (maximum), regulated to 0.3 - 0.5 barg (5 – 7 psig)	
	20 lmin ⁻¹ / 0.7 ft ³ min ⁻¹
Seal purge supply pressure (minimum - maximum)	
	2 – 10 barg / 29 – 145 psig
Noise (max. with exhaust silencer)	
50 Hz	82 dB(A)
60 Hz	82 dB(A)
Weight (with frame and standard motor)	
50 Hz	918 kg / 2024 lbs
60 Hz	960 kg / 2116 lbs
Inlet	3 ANSI / DN80
Outlet	1.5 ANSI / DN40
Pumping mechanism	
	3 stage reversed claw

* Consult Edwards

Ordering Information

Product Description	Order No.
EDP400 50 Hz, Bareshaft Pump	A70542000
EDP400 60 Hz, Bareshaft Pump	A70541000
Accessories & Spares	Order No.
Spares Kit Routine Maintenance DP	A70501825
Spares Kit Motor Fitment DP	A70501805
Spares Kit Upper Bearing DP	A70501826
Spares Kit Swept Volume DP	A70501827
Spares Kit Lower Bearing DP	A70501828
Std Replacement PRV DP	A70501816
Bellows Replacement PRV DP	A70501820
Swing PRV Chemical	A70501832
Spares Kit Bellows Overhaul DP	A70501829
Spares Kit O Ring DP	A70501821
Spares Kit Std PRV Overhaul DP	A70501831
Spares Kit Swing PRV Overhaul Chemical	A70501833
DP250/EDP200 Clutch Tools	A21071082